

EYE EXAMINATION– ECO FRIENDLY EYE WEAR

With everyone trying to find new ways to make less of a negative impact on the environment these days, people are beginning to take a closer look at their lives and examine the areas in which they can make positive changes. If we are reconsidering every day objects we use like shopping bags and beauty products, why not consider everyday items we need, like our eyewear? We're here to examine more earth-friendly eyewear options.

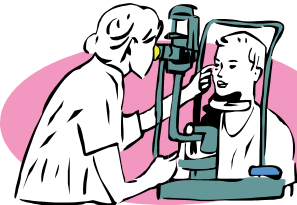
While contact lenses have become a fast favorite of the visually impaired, they will continue to generate waste—via the non-biodegradable disposable lenses and plastic packets they come in—until some sort of soy or cornstarch version of the lenses and their packaging emerges.

Don't worry contact lovers, there are options that produce less waste. Instead of using contact lenses that you have to dispose of daily or weekly, ask your optometrist about options for contact lenses that are only changed every other week or monthly. This will vastly cut down on the amount of lenses and packaging disposed of over time.

As far as glasses go, one pair of glasses every two years or so would unarguably produce less waste than contacts; however, there must be some way to make being bespectacled even more environmentally friendly as well. Efforts to make your eyewear better for the environment can begin before you get new glasses, when you want to retire old glasses, or both. By exploring earth-loving rim options and making sure your old glasses are disposed of in the best possible way, you can be on the cutting edge of making eyewear earth-friendly.

More and more companies are revolutionizing eyewear by providing frames made of eco-friendly natural and recycled or recyclable materials. Here are some companies that produce green eyewear:

- **Link Skin**—Provides eco-friendly eyewear made from products made from recycled materials. www.linkskin.com
- **Equation**—Reuses materials by reselling used eyeglasses and readers. www.equationllc.com
- **Nouveau Eyewear**—Eyeglass Distributor who in a partnership with American Forest now offers a collection called "Global Releaf". Nouveau Eyewear will plant a tree for every Global Releaf frame sold through the American Forests Global Releaf program. www.nouveaueyewear.com



You can also help the planet, and someone less fortunate, by recycling your old glasses. There are many companies and groups with locations where you can drop off your retired frames to be reused by someone who needs them:

- **Lions Clubs**
- Almost any optical center, including **Lenscrafters** and **Target Optical**.
- **Goodwill Industries**
- **Unite for Sight**—www.uniteforsight.org
- **New Eyes for the Needy**—www.neweyesfortheneedy.org
- **Give the Gift of Sight**—www.onesight.org

Mailing address:

Licking County Recycling & Litter Prevention
20 South Second Street
Newark, Ohio 43055

Physical address:

777 East Main St. Newark

Hours: Monday-Friday am - 4pm

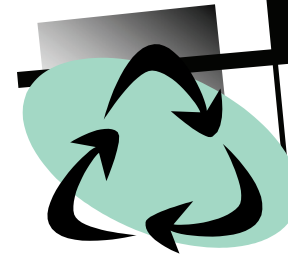
Phone: 670-5125

Fax: 349-1486

**We are on the web
at lcounty.com**

LICKING COUNTY RECYCLING AND LITTER PREVENTION

LICKING COUNTY RECYCLES



March / April 2010

BE A "GREEN" STAR

EARTH DAY is special to all of us. We are giving the young people of Licking County the chance to spread the word through art and word.

PSA CONTEST

This contest allows students in 6th grade to 12th grade to try their hand at writing an environmental commercial for radio. The ad can be no longer than 30 seconds and must promote Earth Day. Their subject can be about recycling, not to litter or promoting ways to care for our community and earth. The contest will be judged by our staff and WCLT/T-100 PSA Director Kelly Bradshaw. The winners of the contest will go to the T-100 studios to record their PSA. This is great for English and Science classes. The deadline for entries to be received at the Recycling office is **March**

15th.

PSA Winner from C-TEC



RECYCLED ART CONTEST

This is a contest for elementary students. Individual students or groups are to make a piece of art using items that can be recycled or reused. The theme for the project is "**Earth Day, Every Day.**" The piece of art should reflect why we should recycle, not litter or care for our earth. These projects will be judged in your school or classroom the week of April 12th. The

finalists will be on display at the Licking County Library in downtown Newark from April 19th-April 29th.

Any schools wanting to be involved with the Recycled Art Contest should contact us by April 5th.

Call 740-670-5126 or e-mail Luellen at ldeeds@lcounty.com for more information on both of these contests.



Newton Elementary

STAFF:

Director Larry Lloyd	
Education Luellen Felumlee	
Richard "Bump" Stagers	
Alana Meek	
John George	
Mike Matheny	
Max Tharp	

**APRIL
22nd
is
EARTH
DAY**





IN HONOR OF ST. PATRICK'S DAY: GOING GREEN COULD SAVE YOU A "POT O' GOLD"

Instead of just wearing green this Saint Patrick's Day, maybe you should consider going green. True, it may not save you a "pot o' gold," but it can definitely save you some cash in the long run and better yet, it can save the planet! Doing something as simple as turning off a light when you leave a room can save you money and make an environmental impact. Here are some easy ways that you can save green by going green this St. Patrick's day:

- Turn off the tap when brushing

your teeth to save gallons of water.

- Change light bulbs around your house from incandescent to compact fluorescent.
- Make sure doors and windows are sealed to prevent heat from leaking out and cold from coming in, and watch your heating bill shrink.
- Know what you want to get out of your fridge or freezer before opening the door. Letting the refrigerator

door hang wide open causes unnecessary use of a lot of energy.

- Unplug unused electronics like microwaves, computers and printers, and cell phone chargers to prevent phantom energy loss.
- Buy reusable containers and use washable dishes and flatware to save room in landfills and money.
- Compost food and yard scraps and save space in landfills and money on gardening this Spring -Fall.

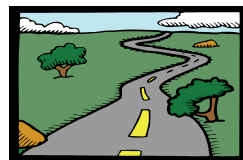
A BIG THANKS TO ADOPT-A-ROAD PARTICIPANTS

A big thank you to those citizens who have taken it upon themselves to keep our roads clean. Five families and eight organizations have signed up to clean two miles of roadway three times a year. They do not do it for money but as a way to keep the roads close to their homes clean and as a service to the rest of the residents of Licking County.

Our adopt-a-road participants are:
Jimmy and Shelly Hoberg
Norman Kennedy

The Snedden Family
The Szauter Family
John and Terry Merrin
Newark-Heath Rotary Club
Long Run United Methodist Church
Licking-Muskingum Community Correction Center
Denison University-Mortar Board and Sigma Phi Epsilon
Caldwell Custom Cutting & Landscaping

Boy Scouts Pack 33
C-TEC Environmental Club
We would like to thank these individuals for their dedication.
To be part of this elite group of citizens call 670-5126.



SWEEP YOUR COMMUNITY CLEAN OF LITTER

Village, cities and communities are signing up to clean their area. It's time for you to sign up for the Licking County Recycling & Litter Prevention's Annual Community Clean Up. It's easy to sign up and rewarding when residents work together for a cleaner

community. First pick a date and then contact us at 670-5128 to sign up. Next, organize your community. Call upon service organizations, sports teams and churches. Then call us back to let us know how many will participate. We

will provide you with trash bags and gloves. We will also send the message out to the local media. It's easy and fun, call us soon.

**Give your community a
"Clean Sweep"**



VOLUNTEERS NEEDED FOR THE GREAT NEWARK CLEAN UP

Licking County Recycling & Litter Prevention has again secured a grant through the Ohio Department of Natural Resources to clean up Newark City parks.

The Earth Day Clean Up event will be held on April 17th. The goal is to clean up 15 Newark City parks and a stretch of the bike path to make the area a safer and more environmental friendly place for families.

In order to accomplish such a huge undertaking we are asking for volunteers from local businesses, organizations, schools and citizens of Newark to pitch in. Our department will provide

bags, gloves and a T-shirt to all who volunteer. After the area is cleaned we will pick up the debris and dispose of it safely. If you are interested in being part of the clean up please call to sign up with Larry Lloyd at 670-5128. Please sign up by April 9th.

The areas designated as part of the Earth Day Clean up are:

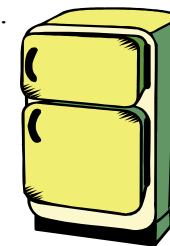
- Levin Park- Sharon Valley Rd.
- Reddington Road Park—1991 Reddington Rd.
- T.J. Evans Park—1480 Mt. Vernon Rd.
- Horns Hill Park—1250 Horns Hill Rd
- North Street Park-Alley off of North St.
- Overlook Park -Buena Vista St.
- Everett Park—170 Everett Ave.



- East Main Parkway-800 to 900 E. Main St.
- Denman Park-210 Ohio St.
- Wells Park -845 Wells Ave.
- Veterans Park- 6th St & W. Main St.
- Penn Station-Corner of 3rd and Walnut Court House Square
- Town Commons-Easy St.
- Wildcat Park- Horns Hill Rd
- Bike Trails-Swans Rd. to E. Main St.
- YMCA to Cherry Valley Rd.

SPRING APPLIANCE AND TIRE COLLECTION

Bald or flat tires? Toasted toaster? Its time to recycle! On May 15th, at the Licking County Highway Garage at 771 East Main St. in Newark, Licking County will hold a tire and appliance recycling collection. All you need to do is bring us your tires and appliances and we will unload them for you. For a small recycling fee we will send them off to be recycled. We can take cash only.



**APPLIANCE COLLECTION
Bring Us Your ...**

- Washer/Dryer Stoves
 - Refrigerators/Freezers
 - Dishwashers
 - Humidifiers/Dehumidifiers
 - Toaster ovens/Toasters
 - Window air conditioners
- Please remove the doors from
REFRIGERATORS AND FREEZERS

We will not take...
Stereos
Small Electronics
Computers
Televisions

COST:
\$3.00 for non-freon appliances
\$5.00 for freon-based appliances

**TIRE COLLECTION
DISPOSAL FEES**

- Passenger Tire: \$2.00
- Light Truck Tire : \$2.00
- Semi -Truck Tires : \$5.00
- Tractor/Farm Equipment Tires: \$10.00

THE FINE PRINT

- Licking County residents only
- Tires from commercial operations WILL NOT be accepted
- 10 tire limit
- **CASH ONLY**
Additional \$1.00 if tire is on the rim

**Saturday, May 15th
8:00 am- 12:00 pm
LICKING COUNTY
HIGHWAY GARAGE**

THIS EVENT FUNDED BY THE
CFLP Solid Waste District